



Agriculture Information System

Building Provincial Capacity for Crop Forecasting and Estimation

Crop Information Portal of Pakistan

Introduction

*FAO Office
Islamabad, 8-17 February 2016*

Antonio Martucci (FAO-DDNS)

Trainings

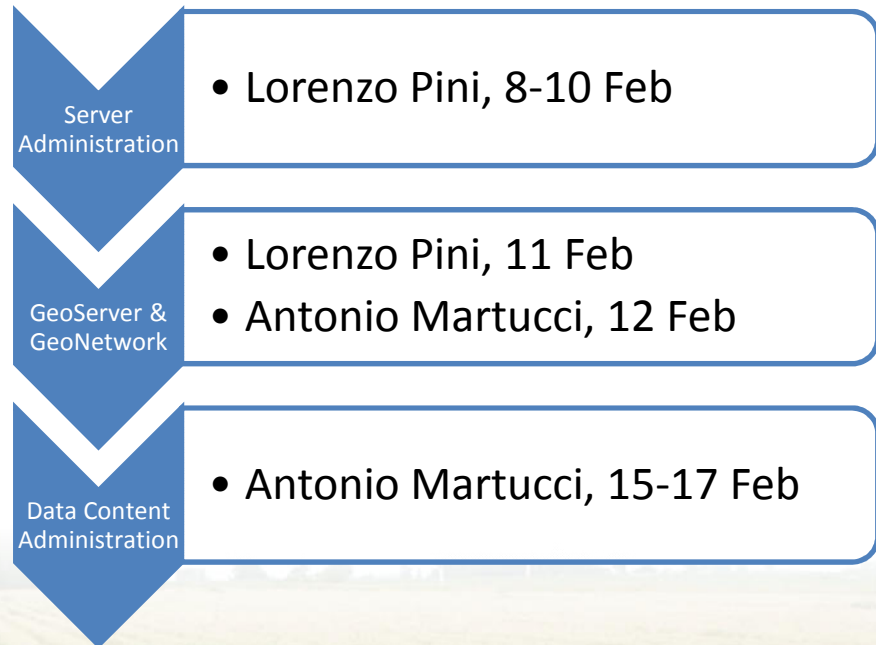


Speakers:

- Antonio Martucci (FAO)
- Lorenzo Pini (GeoSolutions)

Daily agenda:

- 10:00 - 13:00
- Lunch break
- 14:00 - 15:30

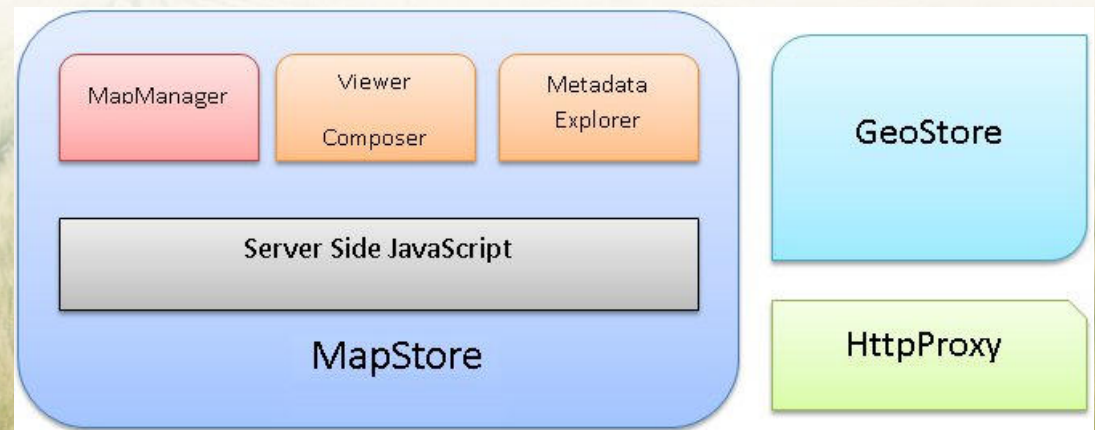


Trainings

- Server Administration and Maintenance: 8-10 Feb
- Overview GeoServer and GeoNetwork: 11-12 Feb
- Data content maintenance: 15-17 Feb

Server Administration & Maintenance

- Distribution digital materials (manuals, etc.)
- Local installation of training version of CIP
- Introduction ADMINISTRATION MANUAL
- Overview OS and server components
- Overview CIP components
- Overview of upgrade steps
- Maintenance / Troubleshooting tasks:
 - Start/stop services
 - Mapstore configuration file
 - How to change banner; update credits/disclaimer pages, insert new button (eg copyright, Contacts, etc..)



Trainings

- Server Administration and Maintenance: 8-10 Feb
- Overview GeoServer and GeoNetwork: 11-12 Feb
- Data content maintenance: 15-17 Feb

GeoServer Overview

- Web Interface and functionalities
- Understanding workspace, stores and layers
- Workflow for creation/editing of WMSs for feature or raster layers
- Styling
- Example of creation of WMSs (simple shape file or raster)

Geonetwork Overview

- Web Interface and functionalities
- Administration section overview
- Creation/editing/importing metadata
- Publishing downloadable data and interactive map
- Linking GeoNetwork and GeoServer to display WMSs
- Managing data publication through users and groups

PUNJAB, SINDH (PAKISTAN) - KHARIF CROP MASKS 2014-2015

Abstract Information on agricultural land use is one of the most important parameters required for policy and decision support regarding availability of reliable crops statistics, food security management and...

Keywords crop mask, kharif, land cover, landcover, agriculture, rice cotton sugarcane, Pakistan, Punjab, Sindh

Schema iso19139

Extent 65.7 23.2 75.9 34.5 2014-01-01T00:00:00 2014-01-31T00:00:00

[Metadata](#) [Data for Download](#) [Interactive Map](#)

PUNJAB, SINDH (PAKISTAN) RABI CROP MASKS: 2013-2014

Abstract Information on agricultural land use is one of the most important parameters required for policy and decision support regarding availability of reliable crops statistics, food security management and...

Keywords crop mask, rabi, land cover, landcover, agriculture, wheat potato, Pakistan, Punjab, Sindh

Schema iso19139

Extent 65.7 23.2 75.9 34.5 2013-01-01T00:00:00 2014-01-31T23:45:00

[Metadata](#) [Data for Download](#)

Simple Search **Advanced Search**

WHAT?

WHERE?

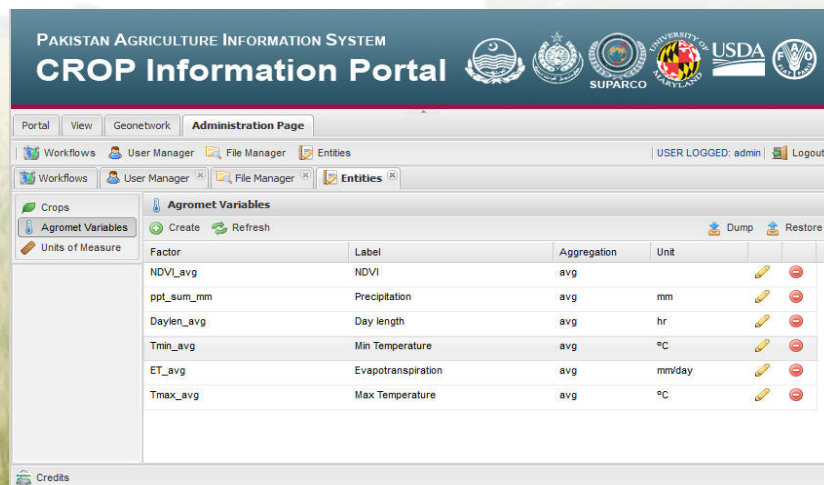
- Any -

Trainings

- Server Administration and Maintenance: 8-10 Feb
- Overview GeoServer and GeoNetwork: 11-12 Feb
- Data content maintenance: 15-17 Feb

Data Content Maintenance

- Web User Interface: overview
- Workflows: overview
- Workflows: main tasks
 - Preparation CSVs
 - Ingestion crop data
 - Ingestion agromet data
 - Ingestion fertilizers data
 - Ingestion water resources data
 - Ingestion market prices data
 - Preparation NDVI images and ingestion
 - NDVI admin indices extraction
 - Preparation and update boundaries
- Entities: overview
 - Create new/edit existing crops
 - Create new/edit existing agromet variables
 - Create new/edit existing units of measure
- File Manager: overview
- Users Manager: overview
- Introduction CONTENT ADMINISTRATION MANUAL



PAKISTAN AGRICULTURE INFORMATION SYSTEM
CROP Information Portal

Administration Page

USER LOGGED: admin | Logout

Factor	Label	Aggregation	Unit		
NDVI_avg	NDVI	avg			
ppt_sum_mm	Precipitation	avg	mm		
Daylen_avg	Day length	avg	hr		
Tmin_avg	Min Temperature	avg	°C		
ET_avg	Evapotranspiration	avg	mm/day		
Tmax_avg	Max Temperature	avg	°C		

Manuals and Presentations

- Training description and Agenda
 - CIP_PAK_training_intro_feb2016.pdf
- CIP2 User Manual
 - CIP_PAK_user_manual_feb2016.pdf
- CIP2 Administration Manual
 - CIP_PAK_administration_manual_feb2016.pdf
- GeoNetwork Manual
 - GEONETWORK_opensource_manual_v210.pdf

☐ Training Introduction

- PAK_CIP2_Training_INTRO_feb2016.pdf

☐ CIP2 Overview

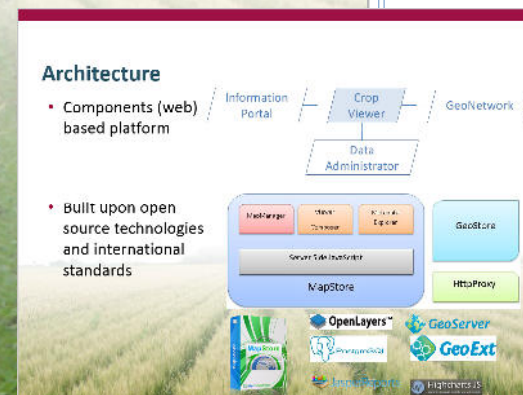
- PAK_CIP2_Overview_feb2016.pdf

☐ CIP2 GeoNetwork

- PAK_CIP2_Geonetwork_feb2016.pdf

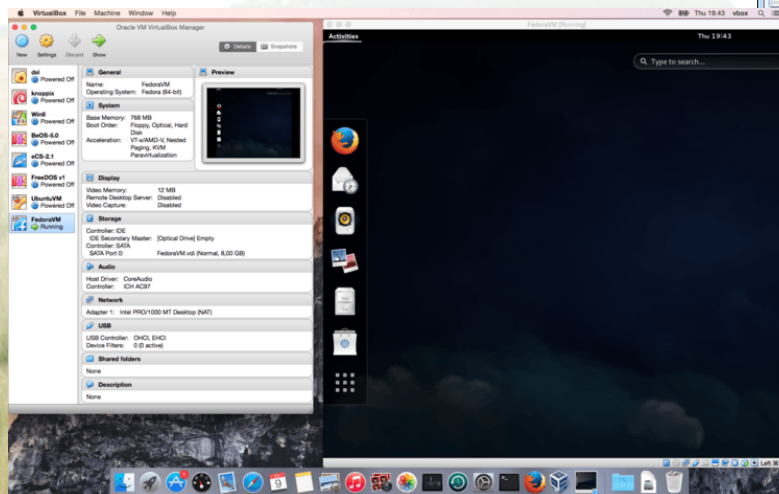
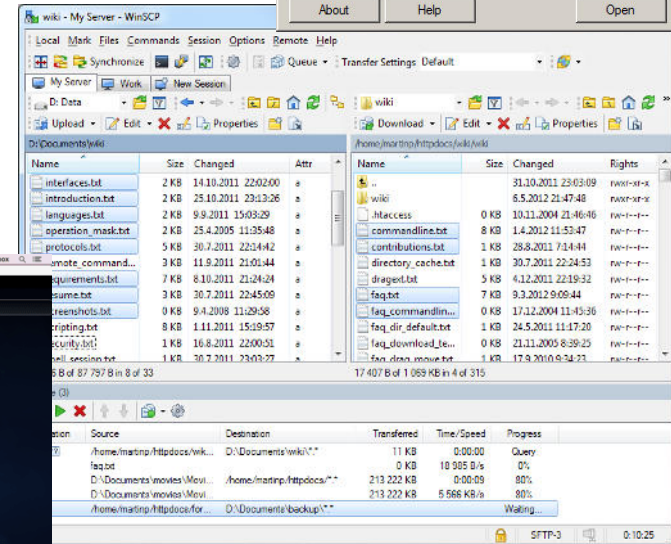
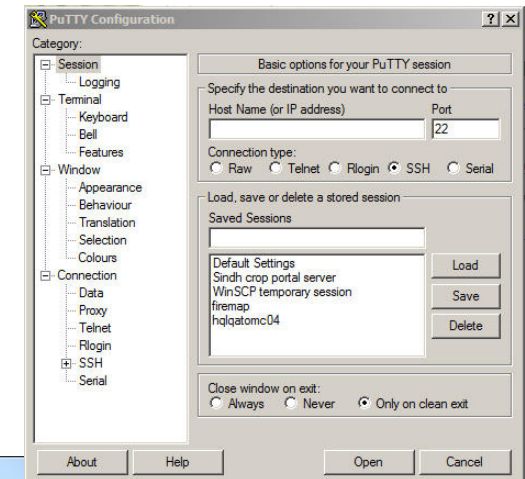
☐ CIP2 Administration

- PAK_CIP2_Administration_feb2016.pdf



CIP 2 Virtual Machine

- **Oracle VM VirtualBox 5.0.14 for Windows** (*VirtualBox-5.0.14-105127-Win.exe*)
 - <https://www.virtualbox.org/wiki/Downloads>
- **WinSCP 5.7.6** (*winscp576setup.exe*)
 - <https://winscp.net/eng/download.php>
- **Putty x Windows** (*putty.exe*)
 - <http://www.chiark.greenend.org.uk/~sgtatham/putty/download.html>



CIP 2 Virtual Machine: setup instruction

- Unzip CIP-Pakistan.zip from USB to local disk (same folder name). Copy the zip also for storage.
- Enable Hardware Virtualization.

There is a requirement for hardware virtualization capability (due to CIP Pakistan virtual machine based on 64 bit) . Since 2006, Intel and AMD processors have had support for so-called “hardware virtualization” (Intel named its technology VT-x; AMD calls theirs AMD-V). This is not much of a limitation since the vast majority of today’s 64-bit and multicore CPUs ship with hardware virtualization anyway.

On many systems, the hardware virtualization features first need to be enabled in the BIOS before VirtualBox can use them. Check in the BIOS of your laptop.

- Install Oracle VM Virtual Box
- Install WinSCP and Putty
- Open Virtual Box and add CIP-Pakistan.vbox VM from the Machine menu
- From the Settings menu, adjust available RAM for the VM to a 50% of your total RAM. Consider that this memory will be taken from the Computer and reserved to the VM as long as it is open.
- Start the VM